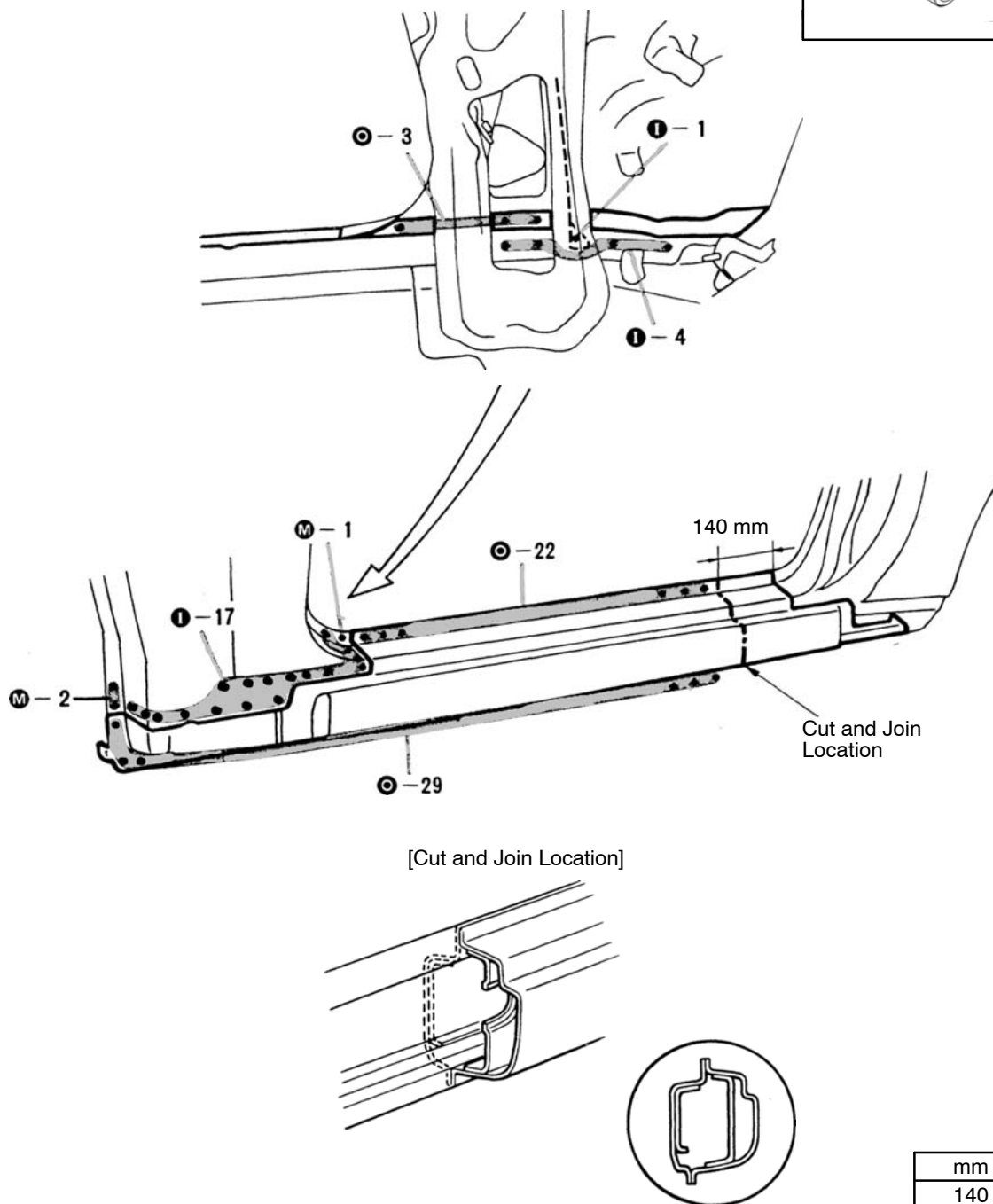
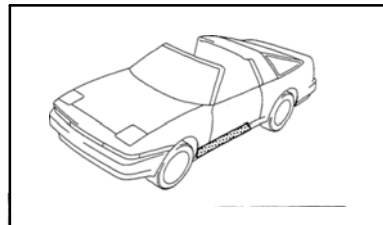


# **OUTER ROCKER PANEL (CUT)**

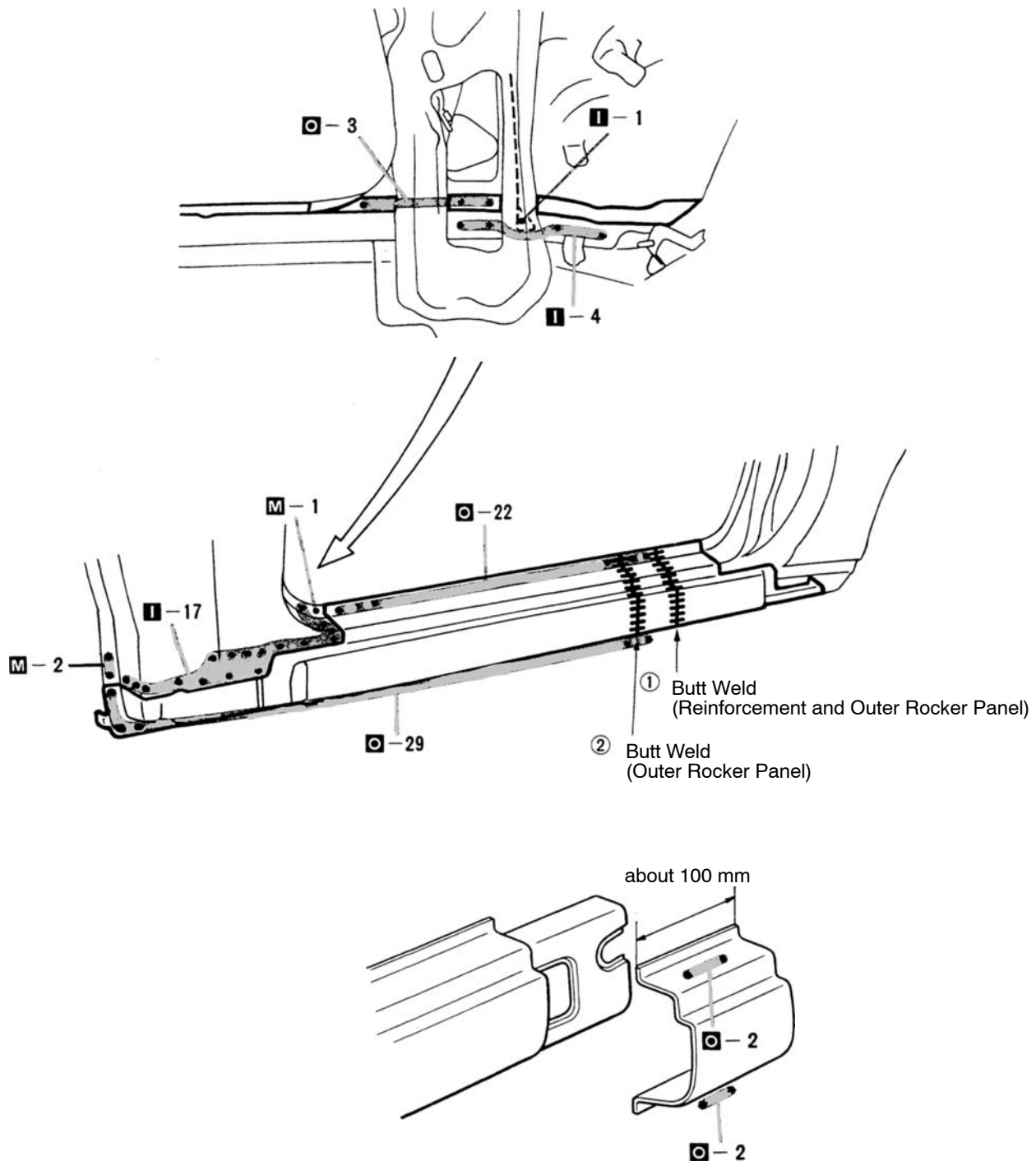
## **REMOVAL**



mm	in.
140	5.51

1. Cut the outer rocker panel together with reinforcement as shown above.

## INSTALLATION



mm	in.
100	3.94

1. After cutting the supply part (outer rocker panel and reinforcement) at the butt weld location 1, cut the outer rocker panel only about 100 mm (3.94 in.).
2. Temporarily install the new part and check the fit of the removable roof and front door.
3. After butt welding the reinforcement and anti-rust treatment for the welding spots, butt weld the outer rocker panel.